



FOUR NATIONS CHESS LEAGUE

Division 2 Round 2 report by Jack Rudd

Pool A

Barbican Youth vs. Sambuca Sharks (4.0-4.0)

The encounter between two sides with active youth policies finished in a 4-4 draw.



I once again allow Ben Purton to tell the story of his side's match: "This is a team who we out-graded but hardly expected to beat; they are young. Ironically, their average age is higher than ours, but still they have more U18s. Despite norm disputes, when Sambuca Sharks (formerly Slough) were a very strong division 1 team, Barbican were a team I had a lot of respect for, due to the fact they were so strong and established despite not funding their team. So all in all, I was very happy to draw 4-4. My captain's draw, followed by 3 more draws by Rendle, Adair and Varnam, left the match at 2-2. The star of Saturday, Selina Khoo, struck again, winning on bottom board leaving us at 3-2 but unclear on all 3 remaining boards. Ruston lost and Roberson won, leaving us at 4-3 and with Sam Williams playing White against Subin Sen. I was confident of us winning until I saw the position where Sam was totally destroyed, leaving us at 4-4. Well played to both sides at the weekend, we scrapped 3 match points this weekend, but will have to play better next weekend as we can't expect our new signings to get us out of trouble."

The critical Williams-Sen game is given below. I don't know at what point Ben saw it, but my take on it was that Williams was in trouble from a fairly early point:

Williams, Samuel G (2198) - Sen, Subin (2098) [D93]

1.d4 Nf6 2.c4 g6 3.Nc3 d5 4.Bf4 Bg7 5.e3 c6 6.Nf3 0-0 7.h3 Be6 8.c5 [8.Qb3 Qb6 9.c5 Qxb3 10.axb3 Nbd7 11.b4 Ne4 12.Bd3 f5 13.Rg1 h6 14.Bh2 a6 15.Nd2 Nxd2 16.Kxd2 Bf7 17.f4 e6 18.g4 Kh7 19.Bg3 Bf6 20.Kc2 Be7 21.Nb1 Rac8 22.Nd2 Rg8 Magerramov,E (2565)-Yandemirov,V (2415)/Podolsk 1992/½-½ (49); 8.Ng5 Bc8 9.Be2 dxc4 10.Bxc4 Nd5 11.Nxd5 cxd5 12.Bb3 Nc6 13.0-0 e6 14.Rc1 Bd7 15.Nf3 Qb6 16.Rc3 Rfc8 17.Qd2 Ne7 18.Rfc1 Rxc3 19.Rxc3 Rc8 20.Ne5 Be8 21.Nd3 Rxc3 22.Qxc3 Bc6 Wehmeier,S (2394)-Kreutzkamp,R (2309)/Germany 2007/½-½ (40)] **8...Ne4 9.Nxe4** [9.Bd3 Nxc3 10.bxc3 Qa5 11.Qb3 Nd7 12.0-0 b6 13.Qb4 Qxb4 14.cxb4 b5 15.a4 a6 16.Ra2 f6 17.Rfa1 Rac8 18.axb5 axb5 19.Ra7 Rfe8 20.Rb7 Ra8 21.Raa7 Rxa7 22.Rxa7 Rc8 23.Nd2 Kf7 Lutz,R-Erben,W/Wuerttemberg 1993/0-1 (58); 9.Ng5 Nxg5 10.Bxg5 f6 11.Bh4 Bf7 12.Be2 Nd7 13.0-0 Qe8 14.b4 e5 15.Bg3 f5 16.Rc1 f4 17.exf4 exd4 18.Nb1 Be6 19.Re1 Qf7 20.Nd2 Nf6 21.Nf3 Ne4 22.Nxd4 Rae8 23.Bh2 Qf6 Zakharova,A (2100)-Timchenko,A (2110)/St Petersburg 2002/½-½ (66)] **9...dxe4 10.Nd2 Bd5**



11.Bc4 [With the benefit of hindsight, 11.g4!? might be the move. If nothing else, it cuts out the ...f5, ...g5, ...f4 plan that proves so successful in the game.] **11...Bxc4 12.Nxc4 Qd5 13.Rc1 Nd7 14.b4 g5 15.Bh2 f5 16.Qb3** [And here, 16.h4 is worth looking at for the same reason as in the previous note.] **16...f4 17.0-0 Kh8 18.Nd2 e5** [Fritz is rather partial to 18...fxe3 here. This is a decision that might charitably be described as "certifiably insane"; the locked-out nature of the white bishop's position is one of Black's biggest assets here.] **19.Qxd5** [19.dxe5 may be best here: Williams's failure in the middlegame to break up the black pawns on the kingside is the major factor in his defeat, and this may have been the last chance to do this.]

19...cxd5 20.Nb3 exd4 21.Nxd4 [21.exd4 might be better; it's possible in some positions to give the d-pawn up for the b-pawn, and it may be advisable to retain the option of doing this.] **21...Bxd4 22.exd4 Rf6**

An interesting endgame position has been reached. Although the white queenside pawn majority looks fearsome, it can be held adequately by the black rooks and knight. Meanwhile, the base of the chain on d4 is vulnerable, chiefly because the bishop cannot come back to support it. **23.a4 a6 24.Ra1 Nf8 25.g3** [25.b5 Ne6 26.bxa6 Rxa6 27.Rfb1 Nxd4 28.Rxb7 Rfc6 29.h4 h6 shows the sort of problems White is facing here: it's surprisingly easy for his pawns to be picked off.] **25...Ne6 26.Rfd1 Rff8 27.Ra3 Kg7 28.Kf1 Kf6 29.Ke2 Kf5 30.Rc3** [30.g4+ Kg6 does nothing except allow a later invasion down the h-file.] **30...Rfc8 31.Rd2 f3+ 32.Kd1 g4**



33.hxg4+ [33.h4 would leave the white bishop permanently entombed. 33...b6 then allows the break-up of the white queenside pawns. 34.Rb3 Rab8 35.Kc2 bxc5 36.bxc5 Rxb3 37.Kxb3 Rb8+ is a typical line: White will then lose either his d-pawn or his bishop.] **33...Kxg4** Threatening to win the bishop; this forces one of the white rooks to divert to the kingside to deal with this. **34.Re3 Ng7 35.Kc2 Nf5 36.Re1 Rc6 37.Kc3 Rc7 38.Ra2 b6 39.a5** Or else Black will play ...a5 himself. **39...bxc5 40.dxc5** [40.bxc5 Rb8 and the rooks will invade down the b-file.] **40...Rb8 41.Rd2 d4+ 42.Kc4 e3 43.Rb2 Rb5 44.Bg1**



44...e2? [44...Rxc5+! does the trick slightly faster: 45.bxc5 Rxb2 46.fxe3 dxe3 47.Bxe3 Nxe3+ 48.Rxe3 f2 49.Re4+ Kxg3 50.Re3+ Kf4+] **45.Rb3 Rd7 46.Rd3 Rdb7 47.Rb3 d3** The b- and c-pawns will be rounded up, and then the king and rook will invade via h1 and g2. **0-1**

RD 2		BARBICAN 4NCL YOUTH	2117	v	SAMBUCA SHARKS	2167
1	w	Ynojosa, Felix Jose (J)	2197	½ - ½	Rendle, Thomas E	2382
2	b	O'Toole, George E	2145	0 - 1	Roberson, Peter T	2221
3	w	Hodgson, John H	2180	½ - ½	Adair, James	2138
4	b	Sen, Subin	2098	1 - 0	Williams, Samuel G	2198
5	w	Manley, Jon P	2146	1 - 0	Ruston, Mark R	2099
6	b	Moore, John C	2049	½ - ½	Purton, Ben J	2144
7	w	Farrand, Julian T	2103	½ - ½	Varnam, Liam D	2174
8	b	Wells, Daniel J	2014	0 - 1	Khoo, Selina (F)	1981
				4 - 4		

Kings Head vs. Wessex 1 (5.0-3.0)

An early setback for Wessex's promotion hopes, as they lost to a slightly stronger Kings Head side. Colin Mackenzie made it 2/2 from this weekend, as Bruce Jenks's attempt at a freeing combination backfired and got his queen trapped. Kings Head's other wins came from Andrew Whiteley (whose game against Martin Simons featured a most unusual finish, in a seemingly ordinary rook ending) and Simon Spivack (who managed to turn around a position in which he had been two pawns down). Wessex's only win came from Roger de Coverly, who got his opponent's king in an unusual mid-board checkmate.

RD 2		KINGS HEAD	2149	v	WESSEX 1	2129
1	w	McMichael, Richard J	2286	½ - ½	Lock, Gavin R	2188
2	b	Kwiatkowski, Feliks J	2248	½ - ½	Yeo, Michael J	2153
3	w	Whiteley, Andrew J	2292	1 - 0	Simons, Martin J	2200
4	b	Spivack, Simon SY	2176	1 - 0	Kawuma, Steven Male	2187
5	w	Thomas, Rik H	2220	½ - ½	Kawuma, Moses	2178
6	b	Mackenzie, Colin	2120	1 - 0	Jenks, Bruce	2127
7	w	Davey, Mark *	2020	0 - 1	de Coverly, Roger D	2101
8	b	Haria, Ravi (J)	1828	½ - ½	Thilaganathan, Jessica (F)	1900
				5 - 3		

White Rose 2 vs. AMCA Dragons (3.5-4.5)

The battle between the pool's two promoted sides started cagily, as three games were drawn inside 20 moves. The rest of the match was thankfully of better value for the spectator, this game particularly so:

Richardson,Keith B (2189) - Shaw,Peter (2156) [A10]

1.c4 b6 2.Nc3 Bb7 3.e4 e6 [3...e5 is an alternative move here; it's not generally as well-regarded because the b7 bishop ends up with little to do.] **4.Nf3 Bb4 5.Bd3 Ne7 6.0-0 0-0 7.a3 Bxc3 8.dxc3 f5 9.Re1 fxe4 10.Bxe4 Bxe4 11.Rxe4**



An unusual type of middlegame has arisen. White has the open central files and a strong unopposed bishop; Black has a central pawn majority that will be strong if it's allowed to roll. Chances are finely balanced, but if this game is anything to go by, White's position is the easier to play.

11...Nbc6 12.b4 [12.Bg5 Qe8 13.Qe2 Nf5 (13...Ng6 14.Rd1 Qf7 15.b4 Rfe8 16.Re1 a5 17.b5 Nd8 18.h4 Nb7 19.h5 Nf8 20.Ne5 Qf5 21.Bh4 Nc5 22.Re3 d6 23.Nc6 Qf7 24.Rf3 Qd7 25.Rg3 e5 26.Qf3 Nfe6 27.Ne7+ Kh8 28.Nd5 Richardson,K (2222)-Morgan,B (2239)/Telford 2005/1-0 (60)) 14.Bf4 Rc8 15.Rd1 Na5 (15...h6 16.Bg3 Rf6 17.Nd4 Ncxd4 18.cxd4 Nxc3 19.hxc3 Qg6 20.Rg4 Qf7 21.f3 d5 22.b3 Rd8 23.Qe3 Qe7 24.cxd5 Rxd5 25.b4 Qd6 26.Re1 h5 27.Re4 Qxc3 28.Rxe6 Rg5 29.Re8+ Kh7 30.Qe4+ Schuh,K (2240)-Kengis,E (2560)/Weilburg 1996/1/2-1/2 (66)) 16.b4 Nb7 17.g4 Ne7 18.Bg3 Ng6 19.h4 Nd6 20.Red4 Qf7 21.Ng5 Qf6 22.c5 e5 23.Rd5 h6 24.Rxd6 cxd6 25.Rxd6 Nf4 26.Qe4 hxg5 Eliseev,A (2425)-Churkin,V (2301)/St Petersburg 2005/1-0 (91)]

12...Qe8 13.Qe2 h6 [13...Ng6 could also be played here.] **14.Bf4 Rc8?! After this move, Black appears to be in a lot of trouble. [14...d6 is probably best: the fixed pawn formation with ...d6 and ...e5 is better than the current formation, simply because it does not tie all Black's pieces down to its defence.] 15.Rd1 Ng6?** [15...d6 could still be played.] **16.Bg3 Qf7 17.h4**



17...Rfe8? [The unappealing-looking 17...Nb8, defending d7 without putting a rook on the h4-d8 diagonal, is perhaps best.] **18.h5 Nf8** [18...Nh8 19.b5 Nb8 20.Ne5 Qe7 21.Bh4 wins the d-pawn, and thus causes the fragile black centre to collapse.] **19.b5 Nb8 20.Ne5 Qe7 21.Bh4 Qc5 22.Qf3 d6** [22...Re7 is the only way to hang on for a while, but the material disadvantage and positional minuses will render the game hopeless anyway.] **23.Qf7+ Kh8**

24.Bf6 gxf6 25.Rg4 1-0



RD 2		WHITE ROSE 2	2044	v	AMCA DRAGONS	2125
1	w	Arnott, Jonathan W	2154	½ - ½	Webb, Richard M	2260
2	b	Shaw, Peter	2156	0 - 1	Richardson, Keith B	2189
3	w	Archer, Richard	2066	½ - ½	Coates, Kenneth G	2220
4	b	O'Driscoll, Keiran	2062	½ - ½	Frostick, Clive A	2160
5	w	Faulks, Nick	2102	½ - ½	Turner, Caius AW	2122
6	b	Webb, Matthew D	1986	1 - 0	Duvall, Ian	2062
7	w	Whitaker, Thomas R	1954	0 - 1	Hart, David PO	2012
8	b	Hollingworth, Evie (F)	1874	½ - ½	Tunstall, George S (J)	1978
				3½-4½		

Brown Jack vs. Anglian Avengers (2.5-5.5)

Brown Jack finished just ahead of Anglian Avengers in the relegation pool last season, forcing the latter to rely on withdrawals to retain their place in the division. The Anglian Avengers lived up to their name with a vengeance in this match, winning no fewer than five of the individual games in it. Of particular interest is the top board game, in which Paul Talsma's long-term sacrifice of a piece for two connected passed pawns proved to have been the right decision.

RD 2		BROWN JACK	2100	v	ANGLIAN AVENGERS	2115
1	w	Truran, Michael C	2215	0 - 1	Talsma, Paul A	2252
2	b	Richmond, Peter A	2247	1 - 0	Player, Edmund C	2149
3	w	Padilla Cabero, Pablo	2169	1 - 0	Gregory, Stephen J	2126
4	b	Haydon, Richard	2184	0 - 1	Munson, Shaun D	2172
5	w	Headlong, Timothy	2188	½ - ½	Gray, Mark S	2089
6	b	Richmond, Jane (F)	2118	0 - 1	Merry, Alan B (J)	2074
7	w	Tomboline, David	1987	0 - 1	Cook, Michael P	2073
8	b	Tanner, Gary J	1690	0 - 1	Wallis, Ian J	1982
				2½-5½		

Pool B

Bristol 1 vs. Cheddleton

We seem to be on a mission to make Pool B topsy-turvy. Having lost to one of the weakest teams in it on the Saturday, we then went on to beat its strongest team on the Sunday. Something of the spirit of the 1997-98 "Great Escape" team seemed to be in evidence in the match, and in this game in particular. It's not accurate, it's not always very pretty, but boy, was it hard-fought:

Arkell,Keith C (2478) - Rudd,Jack (2296) [A46]

1.d4 Nf6 2.Nf3 e6 3.c3 c5 4.Bg5 Be7 5.Nbd2 Nc6 [5...0-0 6.Bxf6 Bxf6 7.dxc5 a5 8.e3 Na6 9.Bxa6 Rxa6 10.Nd4 b6 11.cxb6 Rxb6 12.Qc2 Ba6 13.f4 Qb8 14.0-0-0 Bxd4 15.exd4 Qxf4 16.g3 Qc7 17.Rhe1 Rfb8 18.b3 d5 19.Re3 Rc6 20.Nf3 Efimov,I (2401)-Csiszar,C (2412)/Porto San Giorgio 2005/0-1 (43)] **6.e4** [6.e3 0-0 7.Bd3 Re8 8.Bxf6 gxf6 9.Qc2 f5 10.0-0-0 cxd4 11.exd4 Bf6 12.Rdg1 h5 13.h3 Kf8 14.g4 hxg4 15.hxg4 fxg4 16.Rxg4 d5 17.Bb5 a6 18.Bxc6 bxc6 19.Ne5 Bxe5 20.dxe5 Ke7 ½-½ Wycisk,D (1490)-Bonath,M (1761)/Olpe 2005] **6...d5** [6...cxd4 7.cxd4 d6 8.Bd3 h6 9.Be3 Ng4 10.Bf4 e5 11.Bg3 exd4 12.Nb3 Nge5 13.Nfxd4 Nxd4 14.Nxd4 Qa5+ 15.Ke2 Nxd3 16.Qxd3 Bd7 17.Rhd1 0-0 18.Kf1 d5 19.e5 Rac8 20.Kg1 Qb6 21.Nb3 Dickinson,T (2179)-Taylor,P (2229)/Birmingham 2002/½-½ (59)] **7.e5 Nd7 8.Bxe7 Qxe7 9.Bd3** [9.Bb5 is Fritz's idea. Quite why it wants to give Black an extra c-pawn to undermine the white centre is anyone's guess.]

9...a6 [9...f6 is also perfectly playable, with a standard French-type position.] 10.0-0

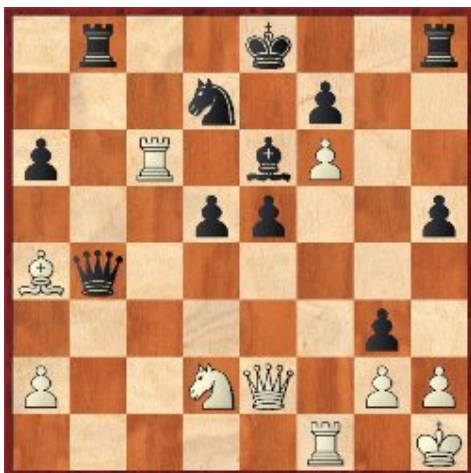


10...g5!? Possibly not objectively justified, but a good idea in the context of the game: we were facing much stronger opposition and needed wins from somewhere, and Keith Arkell's strength does not lie in sacrificing pawns for a speculative attack. 11.Kh1 h5 12.dxc5 Nxc5 13.Bc2 g4 14.Nd4 Nxe5 I have won a pawn and have the makings of an attack against the white king with my advanced kingside pawns. On the minus side, my bishop will not be easy to develop, and I may have a hard job getting the king to a truly safe square. 15.f4 Nc6 [It's difficult to tell whether 15...gxf3 is going to favour White or Black, but I decided the former was more likely: I'm in no position to exploit the open g-file, whereas an enemy rook is already on the f-file.] 16.f5 e5 17.f6 Qd6

18.Nxc6 [18.Nf5 is an alternative line for White: 18...Bxf5 (18...Qxf6? 19.b4 Nd7 20.Ne4±) 19.Bxf5 Rd8 and it's not clear what's going on: my king doesn't look all that safe, but I may be able to round up the f6 pawn and then find a home for the king at my leisure.] 18...bxc6 19.Qe2 Be6 20.Rad1 Qc7 21.b4 Nd7 22.c4 [22.Bf5 was what worried me, but Arkell didn't want to commit his bishop to one avenue of attack at this stage. His judgement turned out to be right.] 22...g3 23.cxd5 [23.hxg3? Bg4 24.Nf3 h4 25.gxh4 Rxh4+ 26.Kg1 Bxf3 27.Rxf3 Rxc4]



23...cx d5 24.Ba4! It was at this stage that I began to feel very uncomfortable. This move makes it clear how badly co-ordinated my pieces are: none of them is exactly badly placed, as such, but I can't get any of them - particularly the rooks - to work well together. 24...Rb8 [24...e4 25.Bxd7+ is rather amusing: all three captures on d7 walk into a tactic that drops the e4 pawn.] 25.Rc1 Qd6 26.Rc6 Qxb4



27.Rxa6? [Arkell misses the chance to finish me off with the brilliant 27.Qxe5!! . The tragedy is that he'd seen the move, but not all the necessary variations. 27...Kf8 (27...Qxa4 28.Qd6+- - the move Arkell had missed.; 27...Qxd2 28.Qxb8+ Nxb8 29.Rc8#; 27...Nxe5 28.Rc8#) 28.Qc7 Kg8 29.Rxe6 Qxa4 30.Re7 and wins.] 27...e4 28.Qe3 h4 29.h3? [29.a3! is a surprising winning move that I don't think either of us considered at the time. 29...Qf8 (29...Qb2 30.Qc5 Kd8 31.Qe7+ Kc8 (31...Kc7 32.Qd6+ Kd8 33.Bxd7 Bxd7 34.Rc6+-) 32.Rxe6+-) 30.Qb6! Rc8 31.Qc7+-]

29...Kd8 30.Rc1 Qb2 I couldn't see any immediate danger, so I decided to gobble up the f6 pawn.

Not so much because I wanted the pawn, but because I wanted the flight square on e7. **31.Rac6 Qxf6 32.Qa7 Ke7 33.Rc7 Rhd8?**

I was so eager to finally get my rooks working together that I missed the simple, obvious, flaw with this plan. [33...Rbd8 is correct.] **34.Qc5+?** [34.Bxd7 Bxd7 35.Rxd7+ is rather embarrassingly obvious, although I'd still have chances of holding this position.] **34...Ke8 35.Qd6 Qb2** [35...Qe7 36.Qe5 scared me, although in the cold light of day, not an awful lot is actually being threatened here. 36...Ra8 looks good enough.] **36.Nb3 Ra8 37.R7c2 Qf6** [37...Qxc1+ flashed through my mind. It's another way to play it, and again, it might be best.] **38.Nc5 Rxa4** [38...Qe7 39.Qe5 Rxa4 may be a better way to give up the exchange.] **39.Nxa4 Ne5 40.Rc8** Ouch, I'd missed this. Fortunately, it's not actually threatening anything. **40...Nd3 41.Qc6+ Kf8 42.Qd6+ Kg7 43.Qxd8**



[43.Rxd8 Nxc1 44.Qf8+ Kg6 45.Qg8+ Kh6 46.Qh8+ Qxh8 47.Rxh8+ Kg5 leads to a similar ending to the game, but with my king better placed and the white rook worse placed.] **43...Qxd8!** It took me a while to decide on this move. As we reached this position, the bottom four boards had finished 2-2. In the remaining three games, David Buckley had an extra pawn but it looked tricky to convert, and Chris Beaumont and Michael Franklin had worse positions that looked holdable. Eventually I decided that, even if this line wasn't winning, I could play it carefully enough to not lose, and thus went for it. [43...Nf2+ 44.Kg1 Nxb3+ forces a draw by repetition.]

44.Rxd8 Nxc1 45.Nc3 e3 46.a4 Nb3 [46...Kf6 47.Rxd5 e2 48.Nxe2 Bxd5 49.Nxc1 Bc4 may actually be winning, but I couldn't be sure.; 46...e2 47.Nxe2 Nxe2 48.a5 is not at all what I want: the white pawn is far too quick.] **47.Ne2 Kf6 48.Kg1 Ke5** Now my central pawns can roll forward, and provided I can avoid the traps, this should be a clear win. **49.Kf1 d4 50.a5** [50.Ke1 looks toughest, but it still doesn't hold: 50...Bc4 51.Re8+ Kd6 52.Rd8+ (52.Re4 Kc5 53.Rxh4 d3 54.Nxg3 d2+ 55.Kd1 Nd4+) 52...Kc5 53.Rc8+ Kb4 54.Rb8+ Kxa4 55.Rh8 Kb4 56.Rxh4 d3 57.Nxg3 Kc3 58.Re4 d2+ 59.Kd1 Kd3 60.Rxc4 Kxc4+] **50...Bc4 51.Rc8 d3 52.Re8+** [52.Ke1 Nxa5 53.Re8+ Be6 and there's no way to prevent the knight's coming round to d4 to support ...d2+ and ...Bb3+.] **52...Kd6 53.a6 dxe2+ 54.Ke1**

54...Na1! [54...Bxa6?? was the last trap: 55.Re6+! with stalemate to come.] **0-1**



2		BRISTOL 1	2179	v	CHEDDLETON	2259
1	w	Beaumont, Chris R	2306	½ - ½	Gormally, Daniel W	2479
2	b	Rudd, Jack	2296	1 - 0	Arkell, Keith C	2478
3	w	Franklin, Michael	2203	½ - ½	Eggleston, David J	2368
4	b	Buckley, David E	2274	½ - ½	Wallace, Paul A	2238
5	w	Dilleigh, Stephen P	2120	½ - ½	Jackson, Sheila (F)	2160
6	b	Bennett, Dominic	2098	1 - 0	McKenna, Jason P	2155
7	w	Pugh, Derek C	2122	½ - ½	Gregory, Philip J	2110
8	b	Zhang, Roy Y (J)	2010	0 - 1	Bennett, Patrick J	2087
				4½-3½		

Warwickshire Select vs. Guildford-ADC 3 (5.0-3.0)

Beware of Warwickshire Select players in minor-piece endings: no fewer than three such endings occurred in this match, and they resulted in one draw and two Warwickshire wins. This helped their team to a 5-3 victory; it would have been more convincing had this game not swung dramatically just before the time control:

Higgs,Anthony RJ (1967) - Hunt,Malcolm A (2088) [C54]

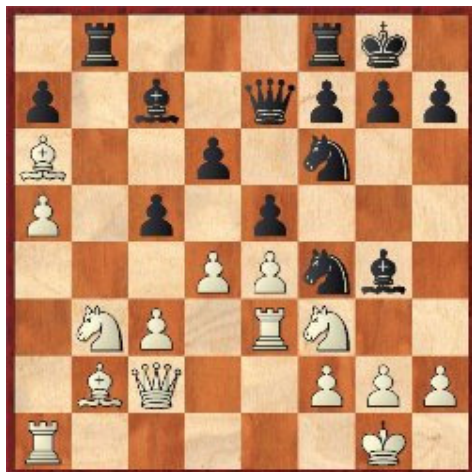
1.e4 e5 2.Bc4 Nf6 3.Nf3 Nc6 4.d3 Bc5 5.0-0 d6 6.c3 Bg4 7.b4



7...Bb6 [7...Nxb4?? 8.d4!±; 7...Bxf3 8.gxf3÷ (8.Qxf3 Nxb4μ)] **8.Nbd2 0-0 9.Bb2?!** Probably not the ideal square for the bishop; in lines like this, it's better off on a3 to put pressure on the d6 pawn, and avoid blocking the b-file. [9.h3 Bh5 10.Re1 a5 11.b5 Ne7 12.Nf1 Kh8 13.Bg5 Nd7 14.Ng3 Bg6 15.d4 f6 16.Be3 Bf7 17.Bxf7 Rxf7 18.d5 g6 19.a4 Qf8 20.Qd2 Bxe3 21.Rxe3 h6 22.Re2 f5 23.c4 Nc5 Nguyen,M (1541)-Haeusler,F (2026)/Leutersdorf 2007/0-1 (43); 9.Bb3 d5 10.a3 dxe4 11.Nxe4 h6 12.h3 Bf5 13.Qe2 Re8 14.Be3 Be6 15.Ba4 Bd7 16.Bb3 Be6 17.Ba4 Bd7 ½-½ Sharif,M (2450)-Spassky,B (2605)/Cannes 1987; 9.Qb3 Nh5 (9...Qd7 10.h3 Bh5 11.Ng5 h6 12.Ne6 Rfe8 13.a4 a5 14.Nc5 dxc5 15.bxc5 Bxc5 16.Nf3 Bxf3 17.Bxf7+ Qxf7 18.Qxf7+ Kxf7 19.gxf3 Rac8 0-1 Villar,G-

Aseguinolaza,I/San Sebastian 1995) 10.g3 Qd7 11.Ng5 h6 12.Nxf7 Rxf7 13.Bxf7+ Qxf7 14.Qxf7+ Kxf7 15.Re1 Be6 16.Nf3 Rf8 17.Be3 Kg8 18.Kg2 Nf6 19.Bxb6 axb6 20.Nd2 Ra8 21.a3 b5 22.f4 g6 23.h3 Rf8 Munier,G (1740)-Fournier,M (1910)/France 2005/0-1 (67)]

9...Ne7 10.Qc2 Ng6 11.d4 Qe7 12.Rfe1 Nf4 13.b5 c5 14.bxc6?! Opening up a file for the black rooks can't be right, although in fairness, it's not easy to suggest an alternative plan for White here. **14...bxc6 15.a4 c5 16.a5?!** This pawn ends up weak, and the bishop is not particularly worse placed on c7 than it was on b6. **16...Bc7 17.Re3 Rac8 18.Ba6 Rb8 19.Nb3**



19...Be6 [19...Bxf3 wins a pawn or shatters the white kingside: 20.Rxf3 Nxe4 21.Qxe4 Rxb3 22.Rxf4 Rxb2] **20.d5 Bd7 21.Nbd2 Bb5 22.Bxb5 Rxb5 23.Nc4 Rfb8 24.Ree1 Qd7 25.h3 N6h5** [25...Rxb2?? is a nice idea, but it doesn't quite work in this position: 26.Nxb2 N6h5 27.Nd3+-] **26.Bc1** Otherwise ...Nxg2 will be murderous. **26...h6 27.Bxf4 Nxf4 28.Nfd2**

28...Qd8! With a double threat of ...Bxa5 and ...Qg5, so material gain is assured. 29.Re3 Qg5 30.g4 Qh4 31.Qd1 Nxb3+ 32.Rxb3? [32.Kg2 Nf4+ (32...Nxf2 33.Qe1) 33.Kg1 and although Black is definitely winning, there is no obvious knockout blow.] 32...Qxh3 33.Qe2 Qxc3 34.Ra3 Qc1+ 35.Kg2



This position is clearly winning for Black; over the next few moves, he manages to throw it away spectacularly - without giving White any real chance to avoid exploiting the opportunity. 35...Rb1? There is no need to give back the exchange: perhaps he missed the vertical defence of h1. [35...Rb4] 36.Nxb1 Rxb1 37.Rh3 Qg1+ 38.Kf3 Rb3+? [38...Qd1 still belongs to the "and White can resign" category: he is two pawns down and needs to go into contortions to have any chance of holding the a-pawn.] 39.Ne3 Bxa5 40.Qa6

40...Qd1+ [40...Kh7 41.Qc8 Rxe3+ 42.fxe3 Qf1+ is Black's best try, and I can't work out whether it would lead to a win or not: 43.Kg3 Be1+ 44.Kh2 Bd2 (44...c4 45.g5 c3 46.g6+ fxc6 47.Rxb6+! Kxb6 48.Qh8+ Kg5 49.Qh4+!!=) 45.g5 c4 46.gxh6 Qf2+ 47.Kh1 g5 48.Qf8 Qf6 49.Kg2 g4 50.Rg3 Qg6÷] 41.Kg2 Qd2 42.Qc8+ Kh7 43.g5 1-0



RD 2		WARWICKSHIRE SELECT 1	2139	v	GUILDFORD-A&DC 3	1984
1	w	Thomas, Nicholas	2291	1 - 0	Stimpson, Philip M	2085
2	b	James, Russell A	2226	½ - ½	Dekker, Alain S	2109
3	w	Mason, Donald J	2255	½ - ½	Hill, David F	2048
4	b	Fishburne, Stewart K	2106	1 - 0	Shepley, Julien M	2022
5	w	Webster, Paul	2106	1 - 0	Lalic, Peter D	1946
6	b	Hunt, Malcolm A	2088	0 - 1	Higgs, Anthony RJ	1967
7	w	Baruch, Andrew JD	2089	1 - 0	Gibbs, Daniel C	1869
8	b	Hale, Katie LW (F)	1954	0 - 1	Quinn, Joseph R	1828
				5 - 3		

e2e4.org.uk vs. Poisoned Pawns 2 (4.5-3.5)

This match completed the quartet of inconsistent results: e2e4 beat Poisoned Pawns 2, who beat Bristol, who beat Cheddleton, who beat e2e4. Like the above match, it was not as close as the final scoreline suggests: Norinkeviciute froze in a winning position against Doci, first blundering and then losing on time. The bottom-board game between Mountford and Jazkiwskyj has a very useful point to make: a bishop on the same colour square as its own blocked pawns is not necessarily a weak piece!

RD 2		E2E4.ORG.UK 1	2077	v	POISONED PAWNS 2	2037
1	w	Sugden, John N	2235	½ - ½	Goodger, Martyn	2147
2	b	Talbot, Andrew R	2161	0 - 1	Rosen, Daniel B	2137
3	w	Jackson, James P	2067	1 - 0	Hutchinson, Norman A *	2096
4	b	Mansson, James C	2142	½ - ½	Kemp, Paul R	2109
5	w	Kennedy, Craig	2036	1 - 0	Bailey, Kevin J	2083
6	b	Norinkeviciute, Rasa (F)	2027	0 - 1	Doci, Stefan	2076
7	w	Ireland, David J	2010	½ - ½	McMahon, Paul	2043
8	b	Jazkiwskyj, Peter	1941	1 - 0	Mountford, Corinne (F)	1602
				4½-3½		

FCA Solutions 1 vs. Celtic Tigers 1 (2.5-5.5)

Celtic Tigers outrated FCA Solutions on all eight boards, and duly converted this into a 5½-2½ victory to take top spot in the pool after the first weekend. FCA Solutions' sole win came on board four, when a typically speculative Robin Haldane attack proved to not be quite sound enough.

RD 2		FCA SOLUTIONS 1	2027	v	CELTIC TIGERS 1	2144
1	w	Almond, Richard J	2144	0 - 1	Hetey, Laszlo	2347
2	b	Brown, Alan M	2109	0 - 1	Hoffman, Hendrik	2252
3	w	Habershon, Paul F	2089	½ - ½	Maciol, Ryszard	2245
4	b	Onley, David	2106	1 - 0	Haldane, Robin W	2159
5	w	Kendall, Paul SN	2069	½ - ½	Pedersen, Carsten	2155
6	b	Freeman, Richard CP	2061	0 - 1	Kemp, Peter D	2164
7	w	Elwin, Adrian G	2013	0 - 1	Josse, Mark	2064
8	b	Evans, Helen I (F)	1626	½ - ½	Owens, Megan R (F)	1764
				2½-5½		

State Of Play So Far...

Both pools are shaping up to be extremely tightly-contested. In Pool A, the two early defeats for White Rose 2 and Brown Jack have left them well off the pace, and I'd be surprised to see either in the top half, but little has yet emerged to suggest what order the current top six will finish in.

Team	Won	Drawn	Lost	Points
KINGS HEAD	2	0	0	4
AMCA DRAGONS	1	1	0	3
SAMBUCA SHARKS	1	1	0	3
WESSEX 1	1	0	1	2
ANGLIAN AVENGERS	1	0	1	2
BARBICAN 4NCL YOUTH	0	2	0	2
WHITE ROSE 2	0	0	2	0
BROWN JACK	0	0	2	0

Pool B is even more extreme in this regard: just one match point separates the top seven. Again, FCA Solutions seem rather sharply adrift, and the sheer strength of Cheddleton's squad should render them immune to too many hiccups of the round 2 variety, but how the rest of the group will pan out is still very much up in the air.

Team	Won	Drawn	Lost	Points
CELTIC TIGERS 1	1	1	0	3
WARWICKSHIRE SELECT 1	1	1	0	3
CHEDDLETON	1	0	1	2
BRISTOL 1	1	0	1	2
POISONED PAWNS 2	1	0	1	2
GUILDFORD-A&DC 3	1	0	1	2
E2E4.ORG.UK 1	1	0	1	2
FCA SOLUTIONS 1	0	0	2	0

You can find all of the games from this round here:

PGN http://www.4ncl.co.uk/0910_div2-02.pgn

Game viewer http://www.4ncl.co.uk/0910_div2-02viewer.htm

And view results and information about the 4ncl here: <http://www.4ncl.co.uk/>